

ANDERSEN

QUALITY MEETS DESIGN



LINK

Design: Hans Thyge & Co.



LINK – A MODULAR TABLE COLLECTION

Designed by Hans Thyge & Co, Link is a flexible and multi- functional table collection. Link is FSC®-certified and produced with a focus on sustainable forestry and environmental considerations. Its composed of a large series of modules which gives you the freedom to customize and create your conference table or workstation your way. Link has an airy and elegant expression, which is emphasized by the simple leg construction that visually causes the linoleum tabletop to hover over the slightly sloped legs.

The solid wood base adds warmth and beauty to the room and contributes to a comfortable working environment. The rails of the base allow you to combine different sizes, and at each table end you can add accessories such as drawers, standing desks or metal trays. Integrated cable management is also available.

PRODUCT HIGHLIGHTS

- Large range of modules
- User-friendly linking system
- Solid wooden beam and legs
- Linoleum table top in various colors
- Knock down construction / flat packed
- Available as bar and Ø120
- Movable and flexible leg construction
- All wooden parts is available in to colours
- Integrated cable management is possible
- Accessories: Solid oak drawer, metal tray, standing desk
- Tilføj FSC®-certified wood



LINK

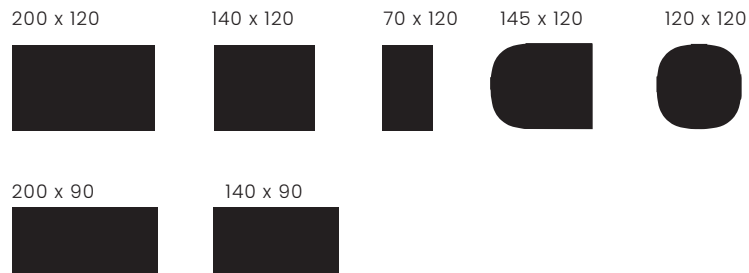
Design: Hans Thyge & Co.



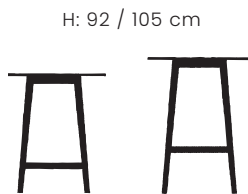
DIMENSIONS

Itemno.	Model	Description	Length, cm	Width, cm	Height, cm
L120070	Link	Additional table top/moduar	70	120	73
L120140	Link	Stand alone/moduar	140	120	73
L120145	Link	Stand alone/moduar	145	120	73
L120200	Link	Stand alone/moduar	200	120	73
L120120	Link Ø120	Stand alone	120	120	73
L090140	Link	Stand alone/moduar	140	90	73
L090200	Link	Stand alone/moduar	200	90	73
LC070140	Link bar	Stand alone	140	70	92
LC070200	Link bar	Stand alone	200	70	92
LB070140	Link bar	Stand alone	140	70	105
LB070200	Link bar	Stand alone	200	70	105

LINK



LINK BAR



LINK

Design: Hans Thyge & Co.



TABLE TOP

The table top is made of 20 mm chipboard, with 2 mm Forbo Linoleum on top, with a rounded solid oak edged.



Linoleum
nero 4023



Linoleum
mushroom 4176



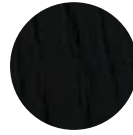
Linoleum
ash 4132

LEGS, RAIL, TABLE TOP EGDE & DRAWER

Legs, rails, table top egde and drawer is made of solid oak. Available in two versions.



Solid oak
Slightly white-tinted
lacquered matt



Solid oak
black
lacquered matt

CLEANING

The Forbo linoleum table top is easy to clean and maintain.

Daily cleaning:

Clean with a damp cloth. Can also be cleaned with a mild mixture of soap and water.

Thorough cleaning:

Use a mixture of water and natural soap or Monel to maintain a resistant surface.

[See the cleaning instructions from Forbo Linoleum here.](#)

All wooden parts can gently be cleaned with a damp cloth.

ENVIRONMENT

All wooden parts are made of FSC certified wood.

Forbo linoleum is a natural product that includes linseed oil, resin, lime, cork and stone and wood flour, with added colour pigments. Forbo linoleum is produced CO2-neutral and is a sustainable choice.



LINK

Design: Hans Thyge & Co.



FEATURES / ACCESSORIES

Drawer: 32 cm. deep oak drawer. Available in slightly white-tinted lacquered oak and black lacquered oak, as shown above.

Metal tray: Perforated steel tray, powder coated black, matt.

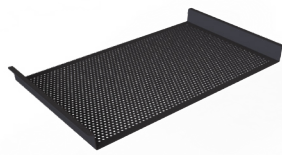
Standig desk: Perforated steel, powder coated in black, matt.

Cable management: integrated cable box in the table top and power boxes is available. See page 5

Bracket: Bracket for assembling modules, powder coated black, matt.



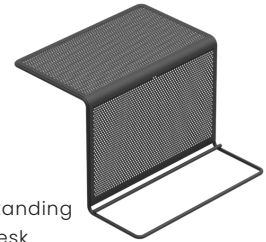
Solid oak
drawer



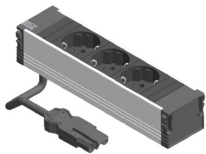
Metal tray



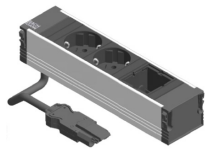
Bracket



Standing
desk



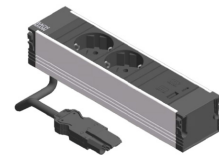
Itemno: LPBOXA
Powerbox
3 x 230 V



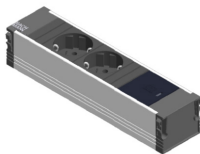
Itemno: LPBOXB
Powerbox
2 x 230 V, 2 x HDMI 2.0



Itemno: LPBOXC
Powerbox
2 x 230 V, 2 x cat 6A



Itemno: LPBOXD
Powerbox
2 x 230 V, 1 x USB A+C



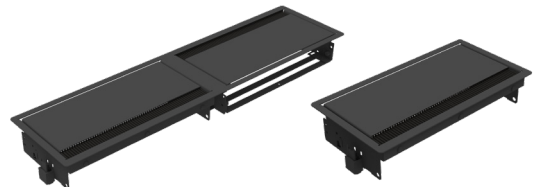
Itemno: LPBOXE
Powerbox
2 x 230 V, 1 x USB C, 30 W



Itemno: LPBOXKS
Cable sock with velcro
3 m. long



Itemno: LPBOXK
Device supply cable
230 V, 3 m. long



Itemno: LPBOXR2
Build in frame -
Double

Itemno: LPBOXR1
Build in frame -
Single



LINK

Design: Hans Thyge & Co.